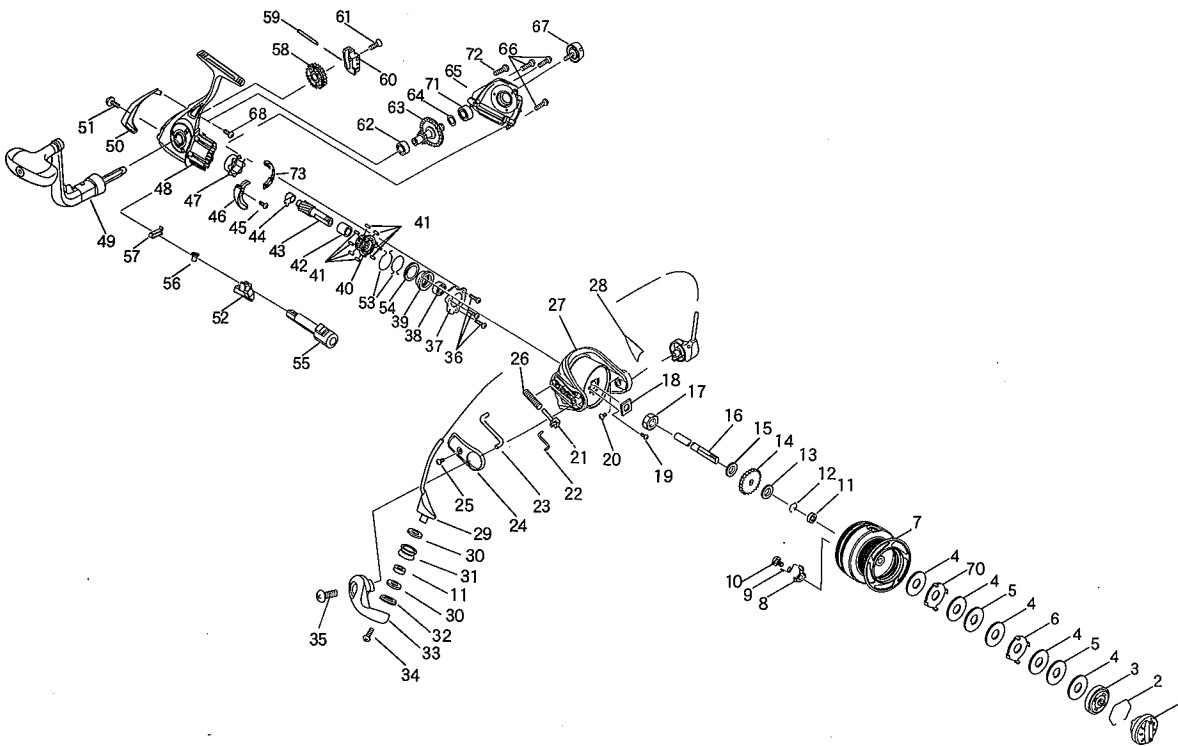


■ EXPLODED VIEW

5000/6000



■ PARTS LIST FOR

NO.	PARTS NO.	PARTS NAME	NO.	PARTS NO.	PARTS NAME	NO.	PARTS NO.	PARTS NAME
1	0232198	DRAG KNOB ASSY.	25	20629	SCREW	49	9446-05-01	HANDLE ASSY.
2	42081	STOPPER SPRING	26	9446-02-11	DEAD POINT SPRING	50	412120	PROTECTOR
3	0268514A	CLICK PLATE ASSY.	27	052123	ROTOR	51	8405-LD-04	SCREW
4	26440	DRAG WASHER	28	612903	COVER B	52	6427-01-08	ANTI-REVERSE LEVER
5	26437	DRAG WASHER	29	02242001	BAIL ARM ASSY.	53	9446-01-21	ONE WAY CLUTCH SPRING
6	26438	DRAG WASHER	30	27705	WASHER	54	9446-01-16	WASHER
7	062158K	SPOOL ASSY.(5000)	31	9446-02-10	ROLLER	55	152721	ANTI-REVERSE CAM
	062159K	SPOOL ASSY.(6000)	32	172000	COLLAR	56	8405-LD-01	SCREW
8	33327	CLICK CLAW	33	9446-02-04C	BAIL ARM LEVER	57	8405-01-29	ANTI-REVERSE SPRING
9	67108	CLICK CLAW SPRING	34	21165	SCREW	58	9446-01-08	BULL GEAR
10	21157	CLICK CLAW SCREW	35	20663	SCREW	59	342030	OSCILLATOR GUIDE SHAFT
11	38248	BALL BEARING	36	20634	SCREW	60	9446-01-09	OSCILLATOR
12	42077	RETAINING RING	37	302162	BEARING SUPPORT	61	9446-01-22	SCREW
13	27453B	CLICK WASHER	38	9446-01-17	BALL BEARING	62	9446-01-18	BALL BEARING
14	13119	CLICK	39	9446-01-12	BALL BEARING COLLAR	63	9446-01-07	MAIN GEAR
15	27694	SPOOL WASHER	40	9446-06-02	HOLDER	64	27290A	WASHER
16	342002	SHAFT	41	9446-06-04	ROLLER	65	042113	SIDE PLATE
17	182000	NUT	42	9446-06-03	INNER RING	66	20559	SCREW
18	9446-01-15	NUT WASHER	43	9446-01-06	PINION GEAR	67	0219492	HANDLE CAP ASSY.
19	9446-01-28	SCREW	44	162350	BUSH	68	9406-01-25	SCREW
20	20634	SCREW	45	20638	SCREW	69	9406-01-15	WASHER
21	68513	SLIDER	46	682522	CAM	70	9446-04-05	DRAG WASHER
22	9446-02-08	LINK	47	9446-06-01	OUTER RING	71	9446-01-19	BALL BEARING
23	9446-02-07	KICK LEVER	48	02032113	MAIN BODY ASSY.	72	209043	SCREW
24	412148	COVER A						

■ SPECIFICATIONS

Model Name	Gear Ratio	Drag Power (Max.)	Weight	Ball Bearing	Line Capacity		
5000	5.0:1	7.5Kg	375.7g	7+1	0.330mm-200m	0.370mm-160m	0.405mm-130m
6000	5.0:1	7.5Kg	378.7g	7+1	0.330mm-230m	0.370mm-200m	0.405mm-150m