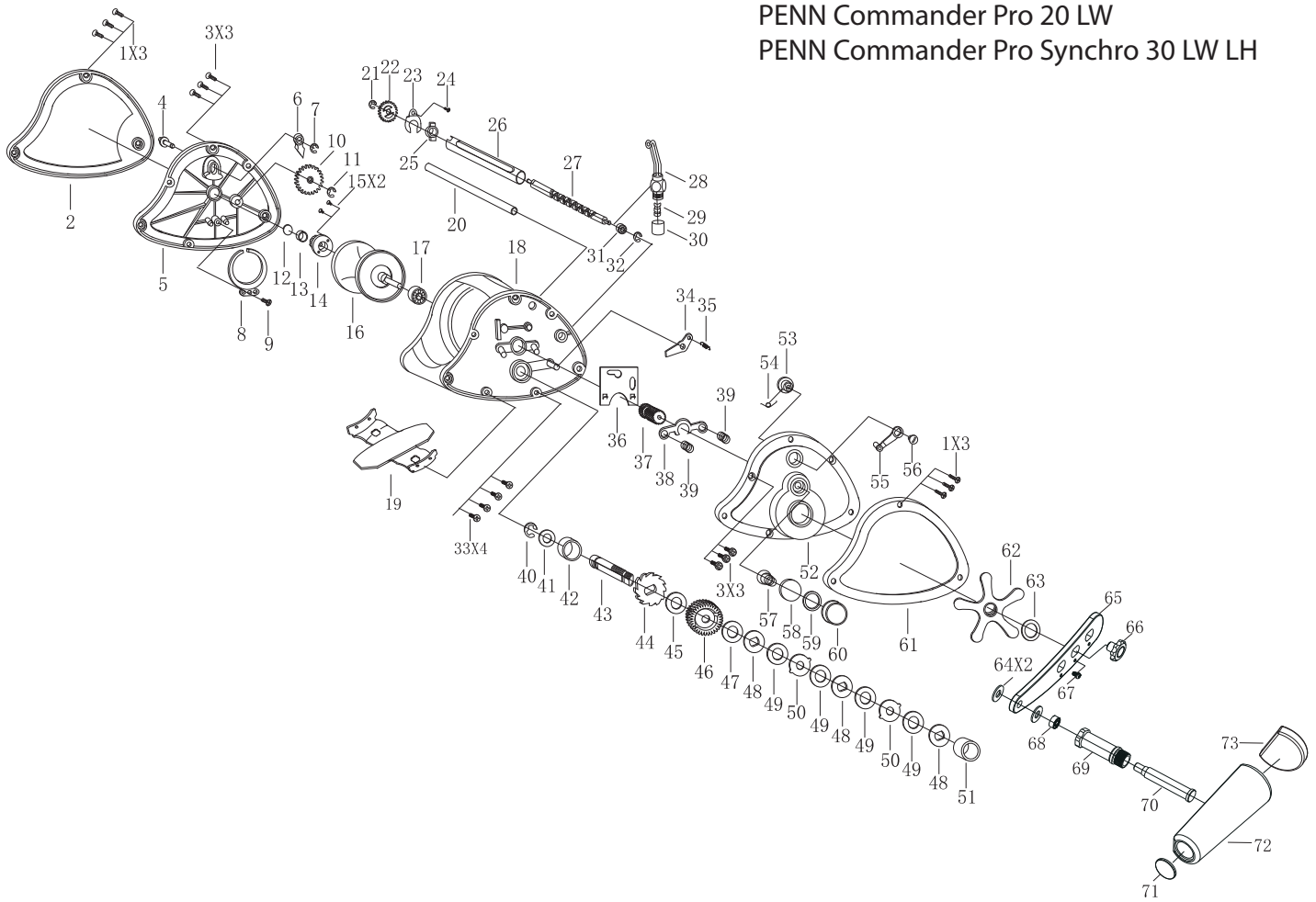


PENN Commander Pro 20 LW  
PENN Commander Pro Synchro 30 LW LH



KEY NO. PART NAMES

- 1 SCREW
- 2 LEFT SIDE PLATE GUARD
- 3 SCREW
- 4 CLICK FLIP KNOB
- 5 LEFT SIDE PLATE
- 6 CLICK SLICE
- 7 E-CLIP
- 8 SPRING CLIP
- 9 SCREW
- 10 MIDDLE GEAR
- 11 E-CLIP
- 12 WASHER
- 13 BUSHING
- 14 TRANSMISSION GEAR
- 15 SCREW
- 16 SPOOL
- 17 BALL BEARING
- 18 MAIN BODY
- 19 FOOT
- 20 LINE GUARD SHAFT
- 21 E-CLIP
- 22 WORM SHAFT FOR LEVEL WIND
- 23 LOCKING SLICE
- 24 SCREW
- 25 BUSHING
- 26 LEVEL WIND GUARD
- 27 WORM SHAFT FOR LEVEL WIND
- 28 LINE GUIDE
- 29 LINE GUIDE PAWL
- 30 LINE GUIDE SHAFT SEAT NUT
- 31 BUSHING
- 32 E-CLIP
- 33 FOOT SCREW
- 34 PAWL
- 35 PAWL SPRING
- 36 CLUTCH SLICE
- 37 PINION GEAR

KEY NO. PART NAMES

- 38 CLUTCH PLATE
- 39 CLUTCH PLATE SPRING
- 40 E-CLIP
- 41 WASHER
- 42 BUSHING
- 43 GEAR SHAFT
- 44 GEAR
- 45 WASHER
- 46 MAIN GEAR
- 47 WASHER
- 48 KEY WASHER
- 49 WASHER
- 50 EARED WASHER
- 51 BUSHING
- 52 RIGHT SIDE PLATE
- 53 CLUTCH DIAL
- 54 SPRING
- 55 CLUTCH WRENCH ASSY.
- 56 SCREW
- 57 DRAG NUT SPRING
- 58 WASHER
- 59 WASHER
- 60 DRAG NUT
- 61 RIGHT SIDE PLATE GUARD
- 62 STAR DRAG
- 63 DRAG WASHER
- 64 WASHER
- 65 HANDLE
- 66 HANDLE NUT
- 67 SCREW
- 68 BUSHING
- 69 CANULAR SCREW
- 70 HANDLE KNOB RIVET
- 71 EPOXY LOGO
- 72 HANDLE KNOB
- 73 KNOB COVER