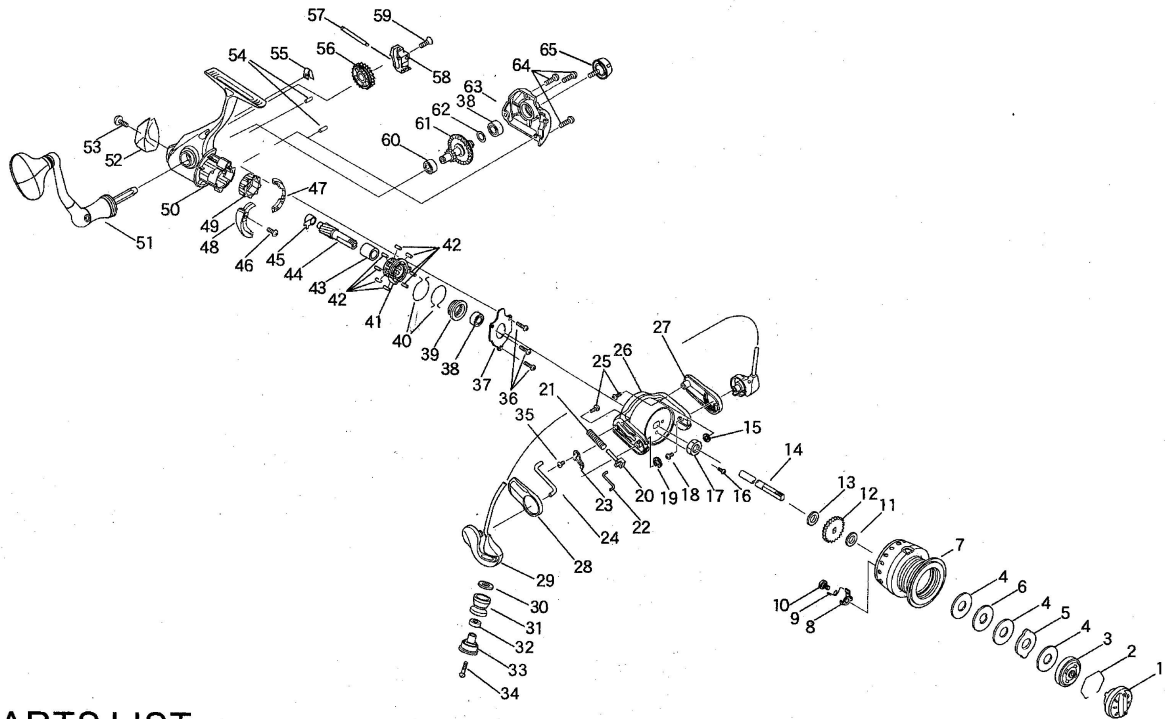


■ EXPLODED VIEW

AP POWER 6000/8000



■ PARTS LIST

NO.	PARTS NO.	PARTS NAME	NO.	PARTS NO.	PARTS NAME	NO.	PARTS NO.	PARTS NAME
1	0232202	DRAG KNOB ASSY.	24	15706	KICK LEVER	48	68573	KICK CAM
2	42089	STOPPER SPRING	25	20400	SCREW	49	68568	OUTER RING
3	0268575	CLICK PLATE ASSY.	26	05265	ROTOR	50	03368	MAIN BODY ASSY.
4	26454	DRAG WASHER	27	41557	COVER B	51	0207386	HANDLE ASSY.
5	26455	DRAG WASHER	28	41556	COVER A	52	6465A-01-03	PROTECTOR
6	26456	DRAG WASHER	29	0229366	BAIL ARM ASSY.	53	20068A	SCREW
7	6465A-03-01	SPOOL ASSY.(6000)	30	27705	WASHER	54	23372	LOCATE PIN
	6465A-03-02	SPOOL ASSY.(8000)	31	6465A-02-02	ROLLER	55	67140	ANTI-REVERSE SPRING
8	33337	CLICK CLAW	32	6465A-02-03	BALL BEARING	56	10501	BULL GEAR
9	67144	CLICK CLAW SPRING	33	6465A-02-01	ROLLER HOLDER	57	34065	OSCILLATOR GUIDE SHAFT
10	21157	CLICK CLAW SCREW	34	20655	SCREW	58	11162	OSCILLATOR
11	27724	CLICK WASHER	35	20656	SCREW	59	20654	SCREW
12	13123	CLICK	36	20366A	SCREW	60	38227	BALL BEARING
13	27725	SPOOL WASHER	37	30168	BEARING SUPPORT	61	08289	MAIN GEAR
14	6465A-01-04	SHAFT	38	38226	BALL BEARING	62	27176	WASHER
15	27688	WASHER	39	17449	BALL BEARING COLLAR	63	04518	SIDE PLATE
16	20606	SCREW	40	67143	ONE WAY CLUTCH SPRING	64	20437A	SCREW
17	18058	HEXAGON NUT	41	68570	HOLDER	65	0219502	HANDLE CAP ASSY.
18	20561	SCREW	42	25097	ROLLER			
19	42009	STOPPER RING	43	17448	INNER RING			
20	68569	SLIDER	44	6465A-01-02	PINION GEAR			
21	67139	DEAD POINT SPRING	45	6465A-01-05	BUSH			
22	68572	LINK	46	20437A	SCREW			
23	30169	PRESSURE PLATE	47	49060	CONTROL PLATE			

■ SPECIFICATIONS

Model Name	Gear Ratio	Drag Power (Max.)	Weight	Ball Bearing	Line Capacity		
AP POWER 6000	5.0:1	10 kg	580g	6	0.330mm-250m	0.370mm-220m	0.405mm-150m
AP POWER 8000	5.0:1	10 kg	595g	6	0.405mm-230m	0.435mm-200m	0.470mm-160m

DESIGNED AND ENGINEERED IN JAPAN