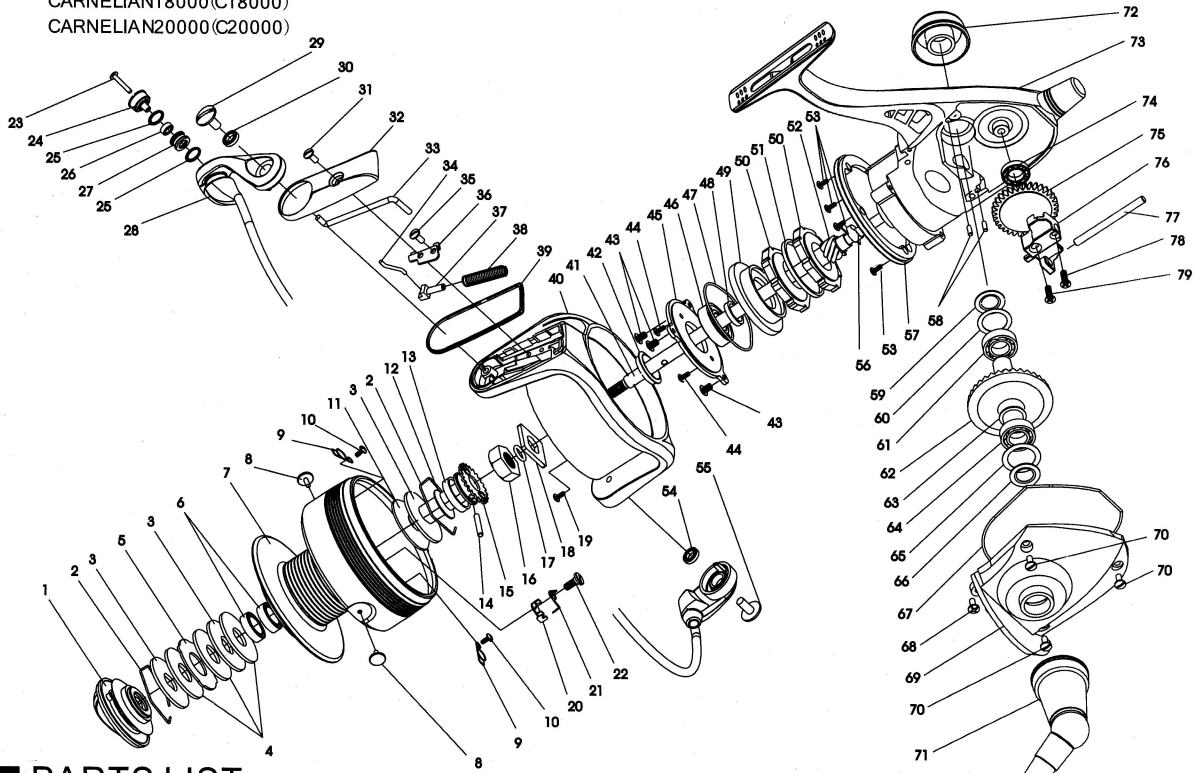


# EXPLODED VIEW

CARNELIAN18000(C18000)  
CARNELIAN20000(C20000)



## PARTS LIST

NO.	PARTS NO.	PARTS NAME	NO.	PARTS NO.	PARTS NAME
1	022201	DRAG KNOB ASSY.	29	21129	SCREW
2	812103	STOPPER SPRING	30	38248	BALL BEARING
3	272100	DRAG KEY WASHER	31	20634A	SCREW
4	272107	DRAG WASHER	32	412130	ROTOR COVER
5	272108	DRAG EARED WASHER	33	812109	KICK LEVER (18000)
6	38084	BALL BEARINGS	34	812110	KICK LEVER (20000)
7	062119	SPOOL (18000)	35	68224	LINK
	062120	SPOOL (20000)	36	20656	SCREW
8	582101	CLIP	37	30170	KICK LEVER PLATE
9	282203	CLIP SPRING (18000)	38	39841	SLIDER
	282202	CLIP SPRING (20000)	39	282201	DEAD POINT SPRING
10	20056D	SCREW	40	812111	ROTOR COVER WASHER
11	272109	WASHER	41	052115	ROTOR (18000)
12	272112	WASHER	42	052116	ROTOR (20000)
13	812116	RUBBER RING	43	342102	MAIN SHAFT
14	222104	PIN	44	382107	RUBBER RING
15	022203	SPOOL BUSH ASSY.	45	20366A	SCREW
16	182101	NUT	46	20610	SCREW
17	462102	RUBBER RING	47	302101	BALL BEARING SUPPORT
18	022201	ROTOR WASHER	48	KT157-01	BALL BEARING
19	20606	SCREW	49	462101	RUBBER RING
20	33327	CLICK	50	382108	INNER SPACER
21	282204	CLICK SPRING	51	382101	BALL BEARING COLLAR
22	212202	SCREW	52	022207	ONE WAY CLUTCH
23	20655	SCREW	53	382104	OUTER SPACER
24	812108	ROLLER HOLDER	54	092101	PINION GEAR
25	272105	WASHER	55	20637	SCREW
26	6465A-02-03	BALL BEARING	56	38248	BEARING
27	252101	ROLLER	57	212201	SCREW
28	022202	BAIL ASSY. (18000)	58	382107	BUSH
	022206	BAIL ASSY. (20000)	59	492101	CONTROL PLATE
			60	23335	PIN
			61	812106	RUBBER WASHER
			62	272102	WASHER
			63	38226	BALL BEARING
			64	082101	MAIN GEAR
			65	27568	WASHER
			66	38088	BALL BEARING
			67	272103	WASHER
			68	812105	RUBBER WASHER
			69	812104	RUBBER RING
			70	20437A	SCREW
			71	042115	COVER
			72	21125	SCREW
			73	022204	HANDLE ASSY.
			74	192101	HANDLE CAP
			75	022205	BODY ASSY.
			76	8*14*3.5	BALL BEARING
			77	102101	BULL GEAR
			78	110101	OSCILLATOR
			79	122101	GUIDE SHAFT
				20554	SCREW
				20607	SCREW

## SPECIFICATIONS

LINE	RETRIEVE PER CRANK	GEAR RATIO	WEIGHT		DRAGPOWER	LINE CAPACITY—PE LINE			BEARINGS	
C18000	C20000	4.375:1	C18000	C20000	MAX	C18000	50Lb(0.42)-350M	60Lb(0.465)-290M	80Lb(0.52)-230M	10+2
99Cm	105Cm		860g	880g	15kg	C20000	50Lb(0.42)-420M	60Lb(0.465)-350M	80Lb(0.52)-270M	