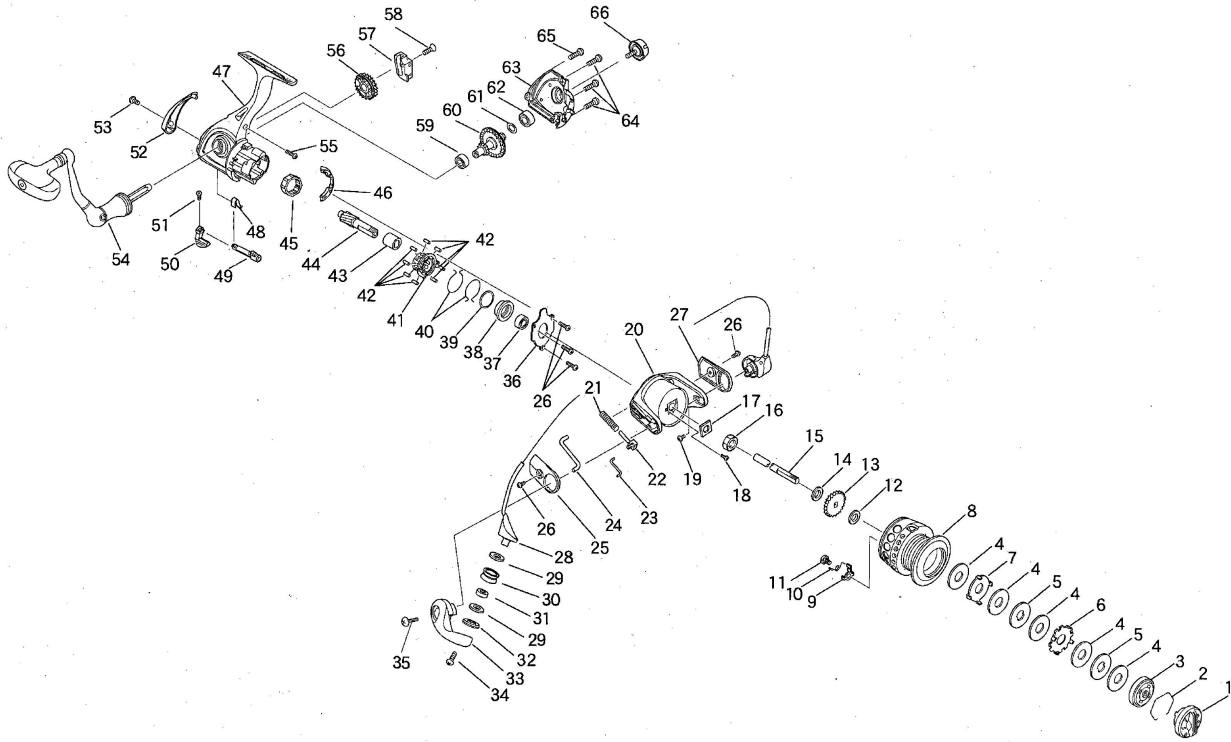


# EXPLODED VIEW

RYOBI Cynos 5000/6000



## PARTS LIST FOR 5000 AND 6000

NO.	PARTS NO.	PARTS NAME	NO.	PARTS NO.	PARTS NAME	NO.	PARTS NO.	PARTS NAME
1	0232205	DRAG KNOB ASSY.	23	9446-02-08	LINK	46	9446-01-20	CONTROL PLATE
2	42081	STOPPER SPRING	24	9446-02-07	KICK LEVER	47	9446-01-00	MAIN BODY ASSY.
3	9446-09-00	CLICK PLATE ASSY.	25	9446-02-03	COVER B	48	9406-01-26	ANTI-REVERSE SPRING
4	26440	DRAG WASHER	26	9466-01-26	SCREW	49	9446-01-11	ANTI-REVERSE CAM
5	26437	DRAG WASHER	27	9446-02-02	COVER A	50	6427-01-08	ANTI-REVERSE LEVER
6	9446-04-04	DRAG WASHER	28	9446-07-00	BAIL ARM ASSY.	51	8405-LD-01	SCREW
7	9446-04-05	DRAG WASHER	29	27705	WASHER	52	9446-01-03	PROTECTOR
8	9446-04-00	SPOOL ASSY.(5000)	30	9446-02-10	ROLLER	53	20629	SCREW
	9456-04-00	SPOOL ASSY.(6000)	31	38248	BALL BEARING	54	9446-05-00	HANDLE ASSY.
9	33327	CLICK CLAW	32	9446-02-09	ROLLER HOLDER	55	9406-01-25	SCREW
10	67108	CLICK CLAW SPRING	33	9446-02-04	BAIL ARM LEVER	56	9446-01-08	BULL GEAR
11	21157	CLICK CLAW SCREW	34	21165	SCREW	57	9446-01-09	OSCILLATOR
12	27453B	CLICK WASHER	35	20663	SCREW	58	9446-01-22	SCREW
13	13119	CLICK	36	9446-01-13	BEARING SUPPORT	59	9446-01-18	BALL BEARING
14	27694	SPOOL WASHER	37	9446-01-17	BALL BEARING	60	9446-01-07	MAIN GEAR
15	9446-01-10	SHAFT	38	9446-01-12	BALL BEARING COLLAR	61	27290	WASHER
16	9446-01-14	NUT	39	9446-01-16	WASHER	62	9446-01-19	BALL BEARING
17	9446-01-15	NUT WASHER	40	9446-01-21	ONE WAY CLUTCH SPRING	63	9446-08-00	SIDE PLATE ASSY.
18	9446-01-28	SCREW	41	9446-06-02	HOLDER	64	GWB-LD-01	SCREW
19	20561	SCREW	42	9446-06-04	ROLLER	65	9446-01-23	SCREW
20	9446-02-01	ROTOR	43	9446-06-03	INNER RING	66	0219477	HANDLE CAP ASSY.
21	9446-02-11	DEAD POINT SPRING	44	9446-01-06	PINION GEAR			
22	68513	SLIDER	45	9446-06-01	OUTER RING			

## SPECIFICATIONS

Model Name	Gear Ratio	Drag Power (Max.)	Weight
5000	5.0:1	7.5kg	400g
6000	5.0:1	7.5kg	405g

DESIGNED AND ENGINEERED IN JAPAN