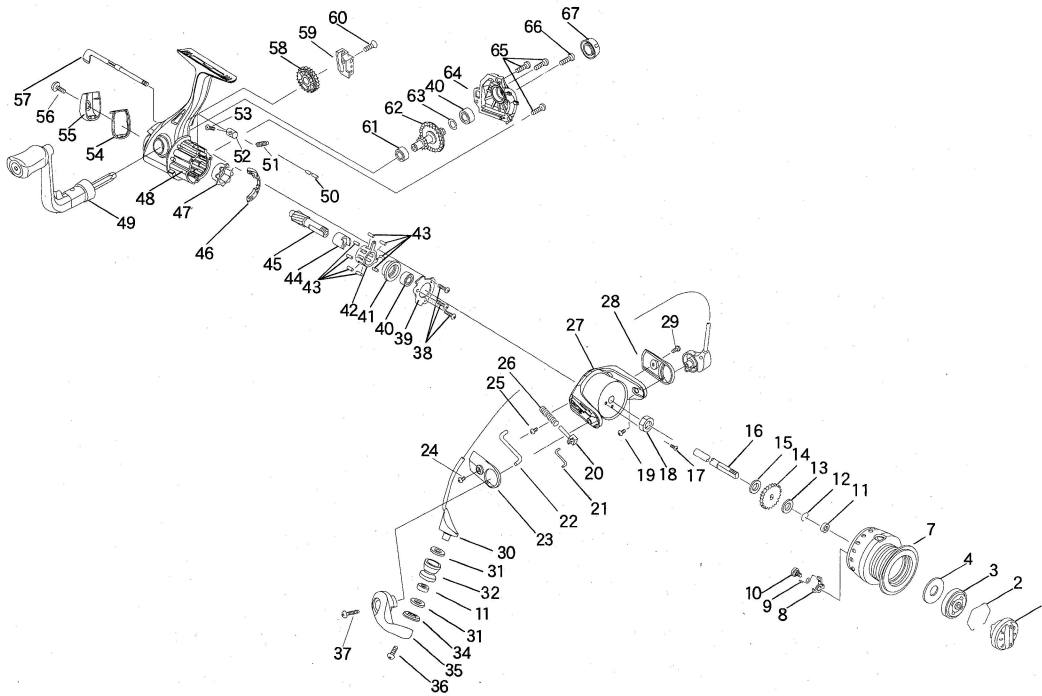


EXPLODED VIEW

RYOBI Ecusima 1000/2000



PARTS LIST

NO.	PARTS NO.	PARTS NAME	NO.	PARTS NO.	PARTS NAME	NO.	PARTS NO.	PARTS NAME
1	0232198	DRAG KNOB ASSY.	24	20629	SCREW	47	68449	OUTER RING
2	42081	STOPPER SPRING	25	20629	SCREW	48	0203370	MAIN BODY ASSY.
3	0268514A	CLICK PLATE ASSY.	26	67077	DEAD POINT SPRING	49	0207380D	HANDLE ASSY. (B.B.)
4	26440	DRAG WASHER	27	05268	ROTOR	50	23349	SPRING PIN
7	0206611	SPOOL ASSY. (1000)	28	41565	COVER B	51	67107	ONE WAY CLUTCH SPRING
	0206612	SPOOL ASSY. (2000)	29	20629	SCREW	52	14353	ANTI-REVERSE CAM
8	33327	CLICK CLAW	30	0229369	BAIL ARM ASSY.	53	20632	SCREW
9	67108	CLICK CLAW SPRING	31	27704	WASHER	54	68588	SPACER
10	21157	CLICK CLAW SCREW	32	25099	ROLLER	55	41569	PROTECTOR
11	38248	BALL BEARING	34	17451	COLLAR	56	ST2.6x6	SCREW
12	42077	STOPPER RING	35	15708	BAIL ARM LEVER	57	15716	ANTI-REVERSE LEVER
13	27453B	CLICK WASHER	36	21165	SCREW	58	10474	BULL GEAR
14	13119	CLICK	37	20663	SCREW	59	11157	OSCILLATOR
15	27694	SPOOL WASHER	38	ST2.3x6	SCREW	60	20383A	SCREW
16	34066	SHAFT	39	30162	BEARING SUPPORT	61	38278	BALL BEARING
17	20662	SCREW	40	38049	BALL BEARING	62	08279	MAIN GEAR
18	18035	HEXAGON NUT	41	17435	BALL BEARING COLLAR	63	27290A	WASHER
19	20634	SCREW	42	68517	HOLDER	64	04521	SIDE PLATE
20	68513	SLIDER	43	25089	ROLLER	65	ST2.6x12	SCREW
21	68519	LINK	44	17413	INNER RING	66	21146	HANDLE SCREW
22	15711	KICK LEVER	45	09332	PINION GEAR	67	0219477	HANDLE CAP ASSY.
23	41563	COVER A	46	49061	CONTROL PLATE			

Model Name	Gear Ratio	Drag Power (Max.)	Weight
1000	5.1:1	2.5 kg	260 g
2000	5.1:1	2.5 kg	262 g