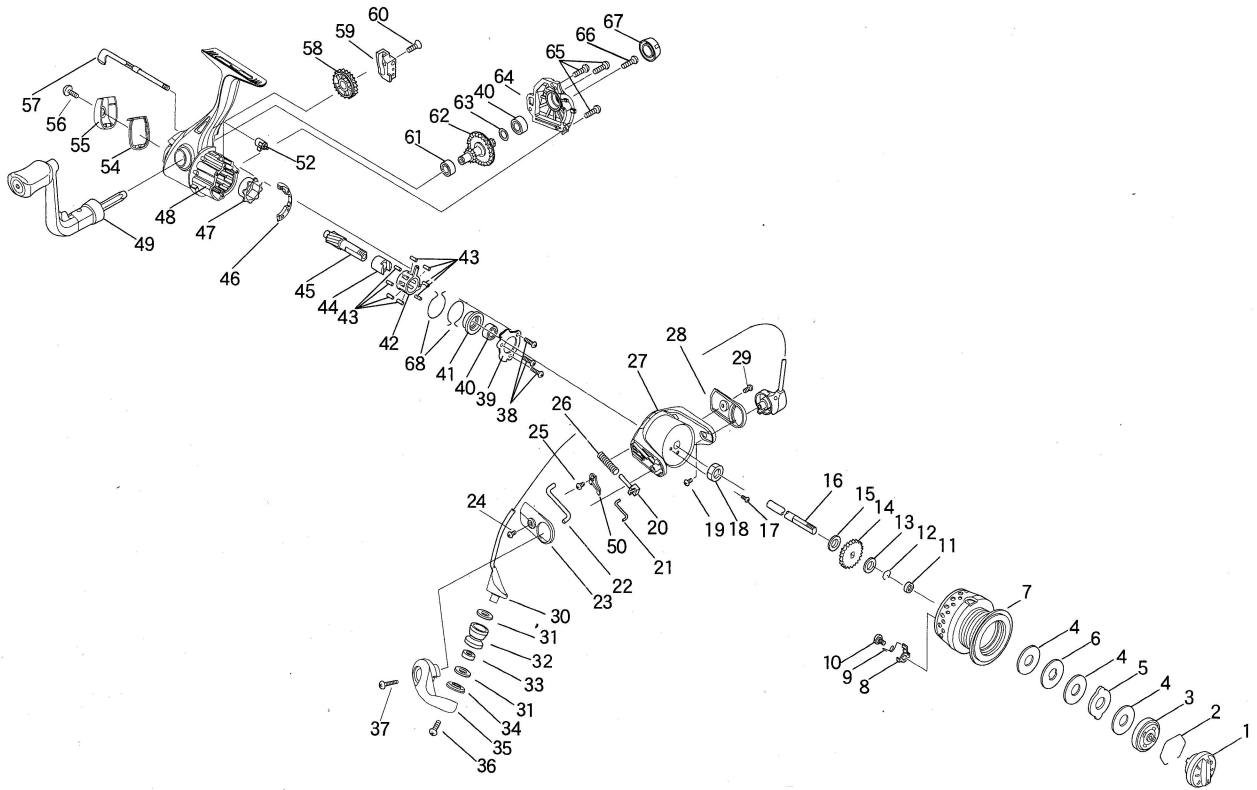


# EXPLODED VIEW

RYOBI Ecusima 6000/8000



## PARTS LIST FOR ECUSIMA 6000VI AND 8000VI

NO.	PARTS NO.	PARTS NAME	NO.	PARTS NO.	PARTS NAME	NO.	PARTS NO.	PARTS NAME
1	0232202	DRAG KNOB ASSY.	23	41559	COVER A	46	49063	CONTROL PLATE
2	42089	STOPPER SPRING	24	20401	SCREW	47	68568	OUTER RING
3	0268576	CLICK PLATE ASSY.	25	20657	SCREW	48	0203371	MAIN BODY ASSY.
4	26454	DRAG WASHER	26	67139	DEAD POINT SPRING	49	0207386	HANDLE ASSY. (BB)
5	26455	DRAG WASHER	27	0205266	ROTOR	50	30170	PRESSURE PLATE
6	26456	DRAG WASHER	28	41560	COVER B	52	14369	ANTI-REVERSE CAM
7	0206615	SPOOL ASSY. (6000)	29	20401	SCREW	54	68590	SPACER
7	0206616	SPOOL ASSY. (8000)	30	0229367	BAIL ARM ASSY.	55	41571	PROTECTOR
8	33337	CLICK CLAW	31	27705	WASHER	56	20068A	SCREW
9	67144	CLICK CLAW SPRING	32	252003	ROLLER	57	15710	ANTI-REVERSE LEVER
10	21157	CLICK CLAW SCREW	33	38157	BALL BEARING	58	10501	BULL GEAR
11	38249	BALL BEARING	34	17455	COLLAR	59	11163	OSCILLATOR
12	06607D	STOPPER RING	35	15705	BAIL ARM LEVER	60	20654	SCREW
13	27724	CLICK WASHER	36	20656	SCREW	61	38227	BALL BEARING
14	13123	CLICK	37	15706	SCREW	62	08289	MAIN GEAR
15	27725	SPOOL WASHER	38	20401	SCREW	63	27176	WASHER
16	34065	SHAFT	39	30169	BEARING SUPPORT	64	04520	SIDE PLATE
17	20607	SCREW	40	38226	BALL BEARING	65	20438	SCREW
18	18058	HEXAGON NUT	41	17499	BALL BEARING COLLAR	66	21106	HANDLE SCREW
19	20561	SCREW	42	68570	HOLDER	67	0219502	HANDLE CAP ASSY.
20	68569	SLIDER	43	25097	ROLLER	68	67143	ONE WAY CLUTCH SPRING
21	68572	LINK	44	17448	INNER RING			
22	15707	KICK LEVER	45	09340	PINION GEAR			

## SPECIFICATIONS

Model Name	Gear Ratio	Drag Power (Max.)	Weight	Ball Bearing	Line Capacity		
ECUSIMA 6000VI	5.0:1	8 kg	552 g	6	0.330mm-250m	0.370mm-200m	0.405mm-150m
ECUSIMA 8000VI	5.0:1	8 kg	555 g	6	0.405mm-230m	0.435mm-200m	0.470mm-160m

DESIGNED AND ENGINEERED BY RYOBI