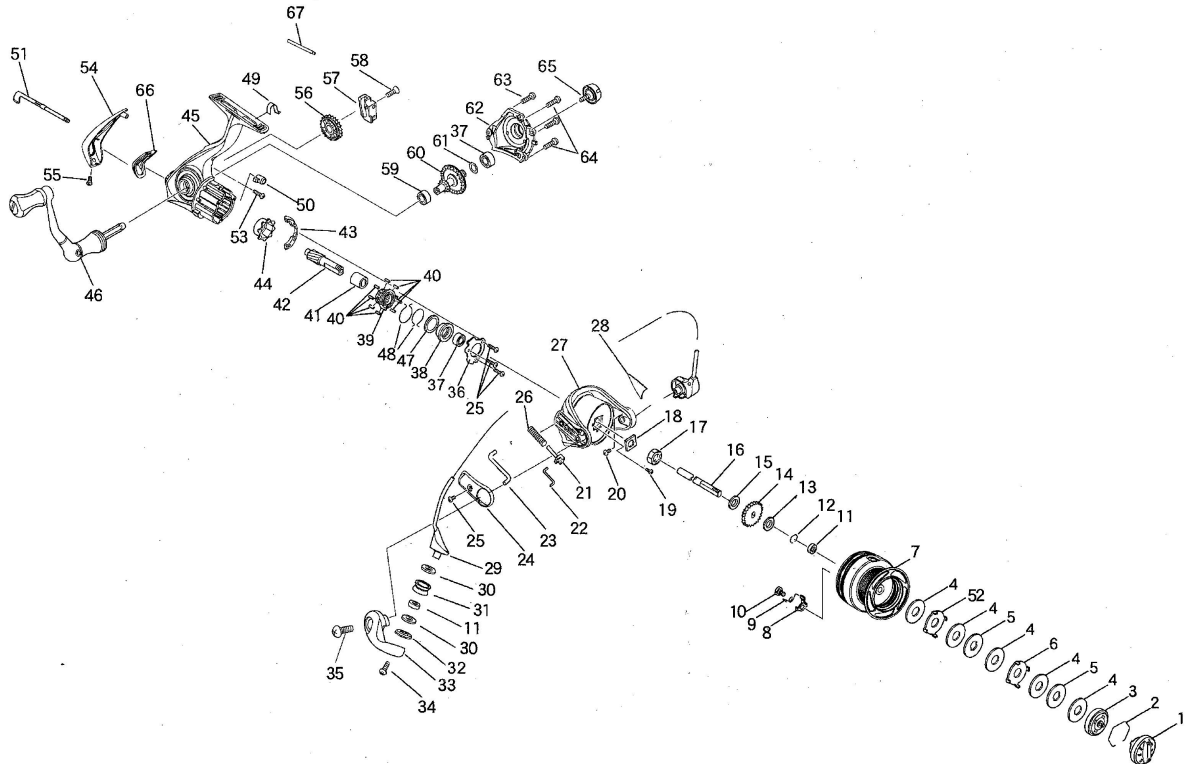


# EXPLODED VIEW

5000/6000



## PARTS LIST FOR

KEY NO.	PARTS NO.	PARTS NAME	KEY NO.	PARTS NO.	PARTS NAME	KEY NO.	PARTS NO.	PARTS NAME
1	0232198	DRAG KNOB ASSY.	23	9446-02-07	KICK LEVER	46	02322108	HANDLE ASSY.
2	42081	STOPPER SPRING	24	412148	COVER A	47	9446-01-16	WASHER
3	0268514A	CLICK PLATE ASSY.	25	20629	SCREW	48	9446-01-21	ONE WAY CLUTCH SPRING
4	26440	DRAG WASHER	26	9446-02-11	DEAD POINT SPRING	49	67140	ANTI-REVERSE SPRING
5	26437	DRAG WASHER	27	052123	ROTOR	50	142000	ANTI-REVERSE CAM
6	26438	DRAG WASHER	28	612903	COVER B	51	152118	ANTI-REVERSE LEVER
7	062158	SPOOL ASSY. (3000)	29	02242001	BAIL ARM ASSY.	52	9446-04-05	DRAG WASHER
	062159	SPOOL ASSY. (4000)	30	27705	WASHER	53	20546	SCREW
8	33327	CLICK CLAW	31	9446-02-10	ROLLER	54	412146	PROTECTOR
9	67108	CLICK CLAW SPRING	32	172000	COLLAR	55	5406-01-05	SCREW
10	21157	CLICK CLAW SCREW	33	9446-02-04C	BAIL ARM LEVER	56	9446-01-08	BULL GEAR
11	38248	BALL BEARING	34	21165	SCREW	57	9446-01-09	OSCILLATOR
12	42077	RETAINING RING	35	20663	SCREW	58	9446-01-22	SCREW
13	27453B	CLICK WASHER	36	9446-01-13	BEARING SUPPORT	59	9446-01-18	BALL BEARING
14	13119	CLICK	37	9446-01-17	BALL BEARING	60	9446-01-07	MAIN GEAR
15	27694	SPOOL WASHER	38	9446-01-12	BALL BEARING COLLAR	61	27290A	WASHER
16	342109	SHAFT	39	9446-06-02	HOLDER	62	02042120	SIDE PLATE ASSY.
17	182000	NUT	40	9446-06-04	ROLLER	63	8406-LD-01	SCREW
18	9446-01-15	NUT WASHER	41	9446-06-03	INNER RING	64	GWB-LD-01	SCREW
19	9446-01-28	SCREW	42	9446-01-06	PINION GEAR	65	6405-00-38	HANDLE CAP ASSY.
20	20634	SCREW	43	492103	CONTROL PLATE	66	412147	PROTECTOR
21	68513	SLIDER	44	9446-06-01	OUTER RING	67	342118	OSCILLATOR GUIDE SHAFT
22	9446-02-08	LINK	45	02032121	MAIN BODY ASSY.			

## SPECIFICATIONS

Model Name	Gear Ratio	Drag Power (Max.)	Weight	Ball Bearing	Line Capacity		
SLAM 5000	5.0:1	7.5Kg	315g	6	0.330mm-200m	0.370mm-160m	0.405mm-130m
SLAM 6000	5.0:1	7.5Kg	318g	6	0.330mm-230m	0.370mm-200m	0.405mm-150m

DESIGNED AND ENGINEERED IN JAPAN