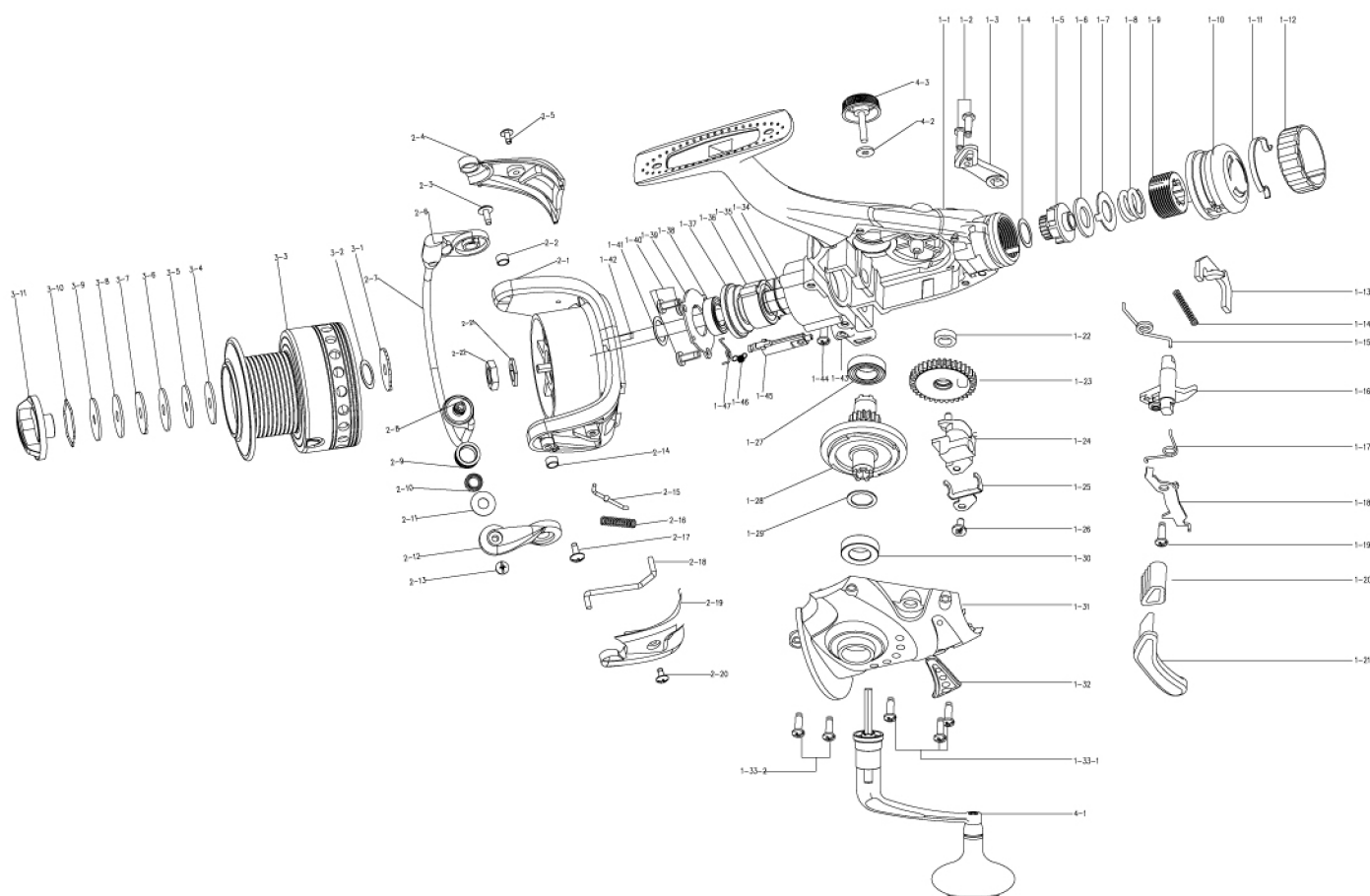




PARTS LIST Speedliner

4+1BB

NO.	PARTS NAMES	NO.	PARTS NAMES	NO.	PARTS NAMES
1-1	BODY	1-33	SCREW	2-17	SCREW
1-2	BODY DECORATION SLICE	1-34	PINION GEAR	2-18	CLICK LEVEL
1-3	RIGHT SWITCH WRENCH	1-35	BALL BEARING	2-19	BAIL ARM COVER
1-4	WASHER	1-36	ONE WAY CLUTCH	2-20	SCREW
1-5	DRAG GEAR	1-37	BUSHER	2-21	WASHER
1-6	DRAG WASHER	1-38	BALL BEARING	2-22	ROTOR NUT
1-7	DRAG WASHER	1-39	FIXED PLATE	3-1	CLICK GEAR
1-8	SPRING	1-40	SCREW	3-2	WASHER
1-9	DRAG SCREW	1-41	WASHER	3-3	SPOOL
1-10	DRAG KNOB	1-42	MAIN SHAFT	3-4	DRAG WASHER
1-11	C RING	1-43	ANTI-REVERSE BUTTON	3-5	DRAG WASHER
1-12	RUBBER RING	1-44	SCREW	3-6	DRAG WASHER
1-13	DRAG ANTI-REVERSE FLAKE	1-45	ANTI-REVERSE	3-7	DRAG WASHER
1-14	SPRING	1-46	SPRING	3-8	DRAG WASHER
1-15	SPRING	1-47	SPRING	3-9	DRAG WASHER
1-16	DRAG TRANSLATED SHANK	1-48	SCREW	3-10	E RING
1-17	SPRING	2-1	ROTOR	3-11	DRAG KNOB
1-18	DRAG TRANSLATED SHANK	2-2	BUSHER	4-1	HANDLE ASS'Y
1-19	SCREW	2-3	SCREW	4-2	HANDLE CAP
1-20	MIDDLE SWITCH WRENCH	2-4	BAIL HOLDER COVER	4-3	WASHER
1-21	LEFT SWITCH WRENCH	2-5	SCREW		
1-22	BUSHING	2-6	BAIL HOLDER		
1-23	OSCILLATION GEAR	2-7	BAIL ASS'Y		
1-24	SLIDE	2-8	BAIL NUT		
1-25	SLIDE SLICE	2-9	LINE ROLLER		
1-26	SCREW	2-10	BUSHING		
1-27	BALL BEARING	2-11	WASHER		
1-28	DRIVE GEAR	2-12	BAIL ARM		
1-29	WASHER	2-13	SCREW		
1-30	BALL BEARING	2-14	BUSHER		
1-31	BODY SIDE	2-15	BAIL ARM SUPPORT PIN		
1-32	BODY SIDE PLATE	2-16	SPRING		