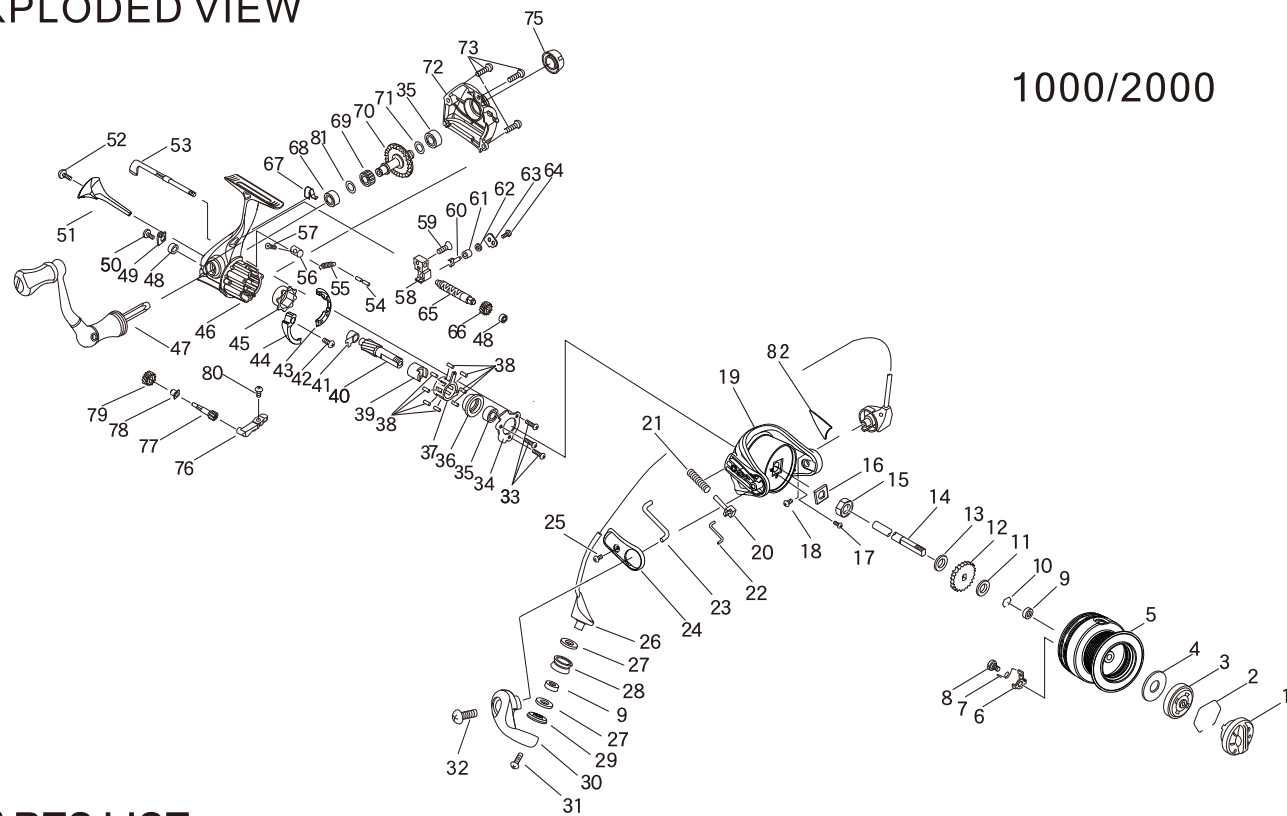


EXPLODED VIEW



1000/2000

PARTS LIST

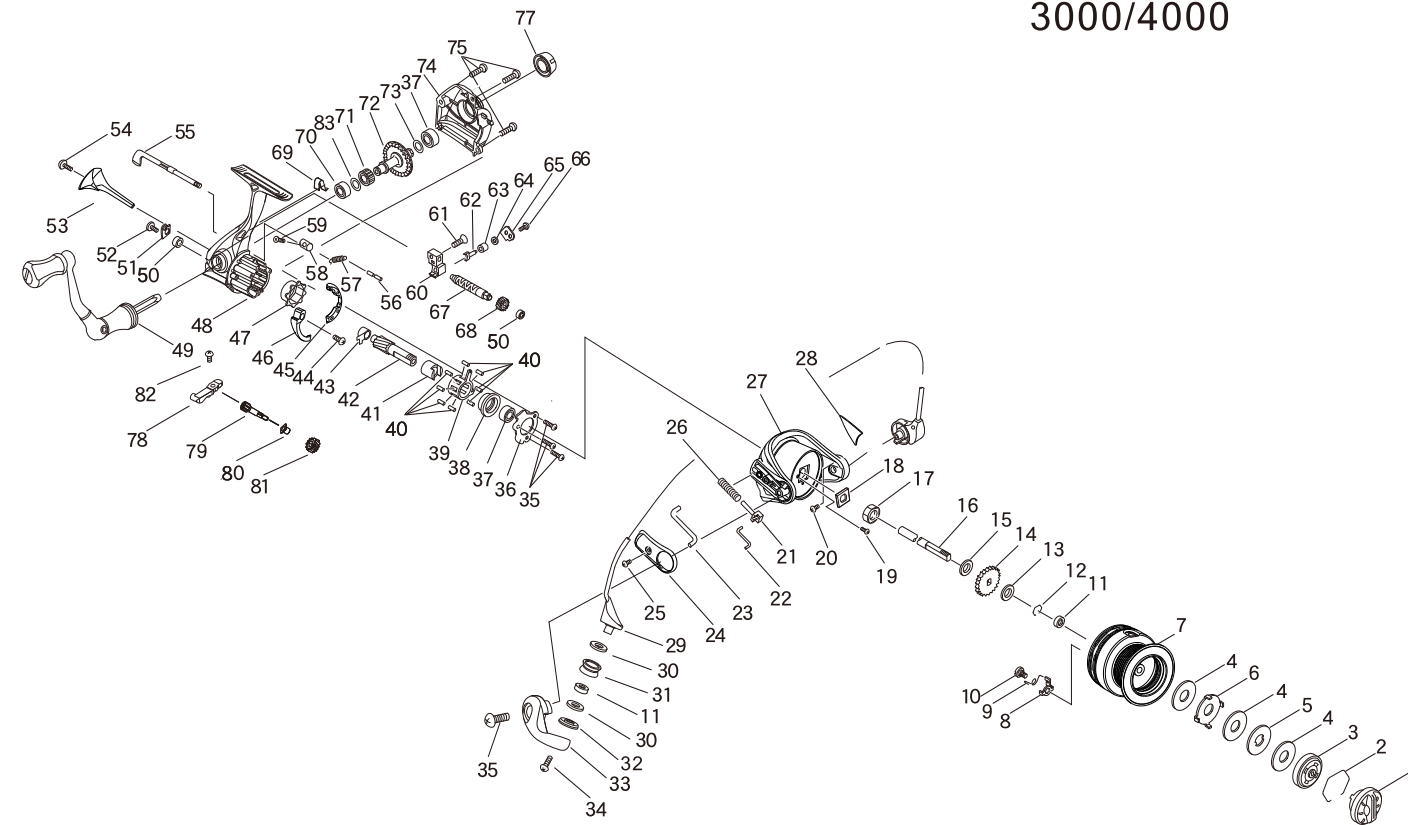
NO.	PARTS NO.	PARTS NAME	NO.	PARTS NO.	PARTS NAME	NO.	PARTS NO.	PARTS NAME
1	0232198A	DRAG KNOB ASSY.	28	25099	ROLLER	56	14353	ANTI-REVERSE CAM
2	42081	STOPPER SPRING	29	17451	COLLAR	57	20632	SCREW
3	0268514	CLICK PLATE ASSY.	30	15708C	BAIL ARM LEVER	58	11159	OSCILLATOR
4	26439	DRAG WASHER	31	21165	SCREW	59	20383A	SCREW
5	062154SR	SPOOL ASSY.(1000)	32	20663	SCREW	60	33318	CLAW
	062155SR	SPOOL ASSY.(2000)	33	20610	SCREW	61	17407	COLLAR
6	33327	CLICK CLAW	34	30162	BEARING SUPPORT	62	27715	WASHER
7	67108	CLICK CLAW SPRING	35	38049	BALL BEARING	63	30166	PRESSURE PLATE
8	21157	CLICK CLAW SCREW	36	17435	BALL BEARING COLLAR	64	20648	SCREW
9	38248	BALL BEARING	37	68517	HOLDER	65	14355	TRAVERSE CAM
10	42077	STOPPER RING	38	25089	ROLLER	66	10479	NO.4 GEAR
11	27453B	CLICK WASHER	39	17413	INNER RING	67	67111	ANTI-REVERSE SPRING
12	13119	CLICK	40	09332	PINION GEAR	68	38059	BALL BEARING
13	27694	SPOOL WASHER	41	16358	BUSH	69	10492	NO.1 GEAR
14	34035	SHAFT	42	20637	SCREW	70	08281	MAIN GEAR
15	18035	NUT	43	49055	CONTROL PLATE	71	27290A	WASHER
16	302001	NUT WASHER	44	68523	KICK CAM	72	04505	SIDE PLATE
17	20662	SCREW	45	68449	OUTER RING	73	20559	SCREW
18	20634	SCREW	46	0203360A	MAIN BODY ASSY.	75	0219492	HANDLE CAP ASSY.
19	052121	ROTOR	47	0207380B	HANDLE ASSY.	76	68515	SUPPORT
20	68513	SLIDER	48	38245	BALL BEARING	77	10477	NO.2 GEAR
21	67077	DEAD POINT SPRING	49	30165	SUPPORT	78	16360	BUSH
22	68519A	LINK	50	20638	SCREW	79	10478	NO.3 GEAR
23	15711	KICK LEVER	51	41533	PROTECTOR	80	20639	SCREW
24	412144	COVER A	52	20634A	SCREW	81	27365	WASHER
25	342113	OSCILLATOR SHAFT	53	15681B	ANTI-REVERSE LEVER	82	612901	COVER B
26	0229369	BAIL ARM ASSY.	54	23349	SPRING PIN			
27	27704	WASHER	55	67107	ONE WAY CLUTCH SPRING			

A500-1705CR

SPECIFICATIONS

Model Name	Gear Ratio	Drag Power (Max.)
1000	5.1:1	2.5kg
2000	5.1:1	2.5kg

EXPLODED VIEW



3000/4000

PARTS LIST

NO.	PARTS NO.	PARTS NAME	NO.	PARTS NO.	PARTS NAME	NO.	PARTS NO.	PARTS NAME
1	0232198A	DRAG KNOB ASSY.	28	612902	COVER B	57	67107	ONE WAY CLUTCH SPRING
2	42081	STOPPER SPRING	29	0229370	BAIL ARM ASSY.	58	14353	ANTI-REVERSE CAM
3	0268514A	CLICK PLATE ASSY.	30	27704	WASHER	59	20632	SCREW
4	26440	DRAG WASHER	31	25099	ROLLER	60	11160	OSCILLATOR
5	26437	DRAG WASHER	32	17451	COLLAR	61	20383A	SCREW
6	26438	DRAG WASHER	33	15708C	BAIL ARM LEVER	62	33318	CLAW
7	062156SR	SPOOL ASSY.(3000)	34	21165	SCREW	63	17407	COLLAR
	062157SR	SPOOL ASSY.(4000)	35	20610	SCREW	64	27715	WASHER
8	33327	CLICK CLAW	36	30162	BEARING SUPPORT	65	30167	PRESSURE PLATE
9	67108	CLICK CLAW SPRING	37	38049	BALL BEARING	66	20648	SCREW
10	21157	CLICK CLAW SCREW	38	17435	BALL BEARING COLLAR	67	14354	TRAVERSE CAM(3000)
11	38248	BALL BEARING	39	68517	HOLDER		14361	TRAVERSE CAM(4000)
12	42077	STOPPER RING	40	25089	ROLLER	68	10479	NO.4 GEAR
13	27453B	CLICK WASHER	41	17413	INNER RING	69	67117	ANTI-REVERSE SPRING
14	13119	CLICK	42	09333	PINION GEAR	70	38059	BALL BEARING
15	27694	SPOOL WASHER	43	16359	BUSH	71	10492	NO.1 GEAR
16	34036	SHAFT(3000)	44	20637	SCREW	72	08283	MAIN GEAR
	34047	SHAFT(4000)	45	49056	CONTROL PLATE	73	27290A	WASHER
17	18035	NUT	46	68524	KICK CAM	74	04506	SIDE PLATE
18	302001	NUT WASHER	47	68449	OUTER RING	75	20559	SCREW
19	20662	SCREW	48	0203361A	MAIN BODY ASSY.	77	0219492	HANDLE CAP ASSY.
20	20634	SCREW	49	0207380E	HANDLE ASSY.	78	68515	SUPPORT
21	68513	SLIDER	50	38245	BALL BEARING	79	10484	NO.2 GEAR
22	68519A	LINK	51	30165	SUPPORT	80	16360	BUSH
23	15712	KICK LEVER	52	20638	SCREW	81	10478	NO.3 GEAR
24	412145	COVER A	53	41534	PROTECTOR	82	20639	SCREW
25	342114	OSCILLATOR SHAFT	54	20634A	SCREW	83	27365	WASHER
26	67145	DEAD POINT SPRING	55	15684B	ANTI-REVERSE LEVER			
27	052122	ROTOR	56	23349	SPRING PIN			

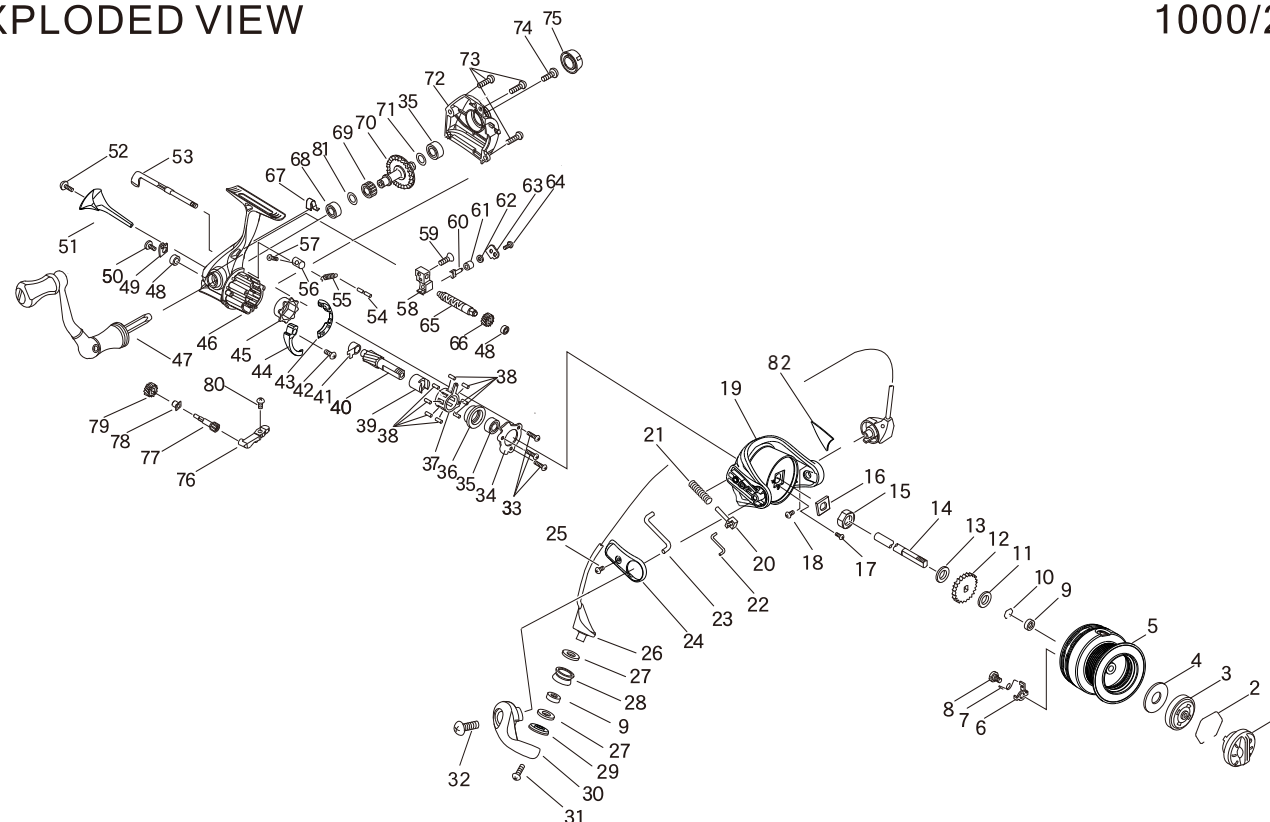
A500-1705CR

SPECIFICATIONS

Model Name	Gear Ratio	Drag Power (Max.)
3000	5.0:1	5.0kg
4000	5.0:1	5.0kg

■ EXPLODED VIEW

1000/2000



■ PARTS LIST

NO.	PARTS NO.	PARTS NAME	NO.	PARTS NO.	PARTS NAME	NO.	PARTS NO.	PARTS NAME
1	0232198A	DRAG KNOB ASSY.	28	25099	ROLLER	56	14353	ANTI-REVERSE CAM
2	42081	STOPPER SPRING	29	17451	COLLAR	57	20632	SCREW
3	0268514	CLICK PLATE ASSY.	30	15708C	BAIL ARM LEVER	58	11159	OSCILLATOR
4	26439	DRAG WASHER	31	21165	SCREW	59	20383A	SCREW
5	062154SR	SPOOL ASSY.(1000)	32	20663	SCREW	60	33318	CLAW
	062155SR	SPOOL ASSY.(2000)	33	20610	SCREW	61	17407	COLLAR
6	33327	CLICK CLAW	34	30162	BEARING SUPPORT	62	27715	WASHER
7	67108	CLICK CLAW SPRING	35	38049	BALL BEARING	63	30166	PRESSURE PLATE
8	21157	CLICK CLAW SCREW	36	17435	BALL BEARING COLLAR	64	20648	SCREW
9	38248	BALL BEARING	37	68517	HOLDER	65	14355	TRAVERSE CAM
10	42077	STOPPER RING	38	25089	ROLLER	66	10479	NO.4 GEAR
11	27453B	CLICK WASHER	39	17413	INNER RING	67	67111	ANTI-REVERSE SPRING
12	13119	CLICK	40	09332	PINION GEAR	68	38059	BALL BEARING
13	27694	SPOOL WASHER	41	16358	BUSH	69	10492	NO.1 GEAR
14	34035	SHAFT	42	20637	SCREW	70	08281	MAIN GEAR
15	18035	NUT	43	49055	CONTROL PLATE	71	27290A	WASHER
16	302001	NUT WASHER	44	68523	KICK CAM	72	04505	SIDE PLATE
17	20662	SCREW	45	68449	OUTER RING	73	20559	SCREW
18	20634	SCREW	46	0203360A	MAIN BODY ASSY.	74	21146	HANDLE SCREW
19	052121	ROTOR	47	0207380B	HANDLE ASSY.	75	0219492	HANDLE CAP ASSY.
20	68513	SLIDER	48	38245	BALL BEARING	76	68515	SUPPORT
21	67077	DEAD POINT SPRING	49	30165	SUPPORT	77	10477	NO.2 GEAR
22	68519A	LINK	50	20638	SCREW	78	16360	BUSH
23	15711	KICK LEVER	51	41533	PROTECTOR	79	10478	NO.3 GEAR
24	412144	COVER A	52	20634A	SCREW	80	20639	SCREW
25	342113	OSCILLATOR SHAFT	53	15681B	ANTI-REVERSE LEVER	81	27365	WASHER
26	0229369	BAIL ARM ASSY.	54	23349	SPRING PIN	82	612901	COVER B
27	27704	WASHER	55	67107	ONE WAY CLUTCH SPRING			

■ SPECIFICATIONS

Model Name	Gear Ratio	Drag Power (Max.)	Weight	Ball Bearing	Line Capacity		
1000	5.1:1	2.5kg	231.5g	8+1	0.205mm-150m	0.235mm-115m	0.285mm-80m
2000	5.1:1	2.5kg	233.6g	8+1	0.235mm-155m	0.285mm-110m	0.330mm-80m